

CLADDING LEGEND

- POLYCARBONATE
- SURFMIST
- SHALE GREY
- WINDSPRAY

NOTE:
THESE DRAWINGS ILLUSTRATE THE OFFICE FITOUT ONLY.
THE REST OF THE DEVELOPMENT HAS BEEN INCLUDED ON
THESE DRAWINGS FOR CONTEXT PURPOSES.

D	19/03/19	99% PRELIMINARY REVISION: RAMP ADDED, EXTERNAL CLADDING DESIGN, FIRST FLOOR LOWERED, BUILDING BY OTHERS DOORS AND OPENINGS SHOWN	AF	WS
C	29/08/18	PREVIOUS DEVELOPMENT APPLICATION	AF	WS
revision	date	details	initials	checked
APPROVED	DESIGN MANAGER	DATE		
1:100 0	10	20	30	40
1:200 0	20	40	60	80
	60	80	100	200

HUNTER PILOT BIOREFINERY
OFFICE FITOUT

LOT 22, DP 1131270, CARRAMERE ROAD
MUSWELLBROOK, NSW, 2333

DRAARCHITECTS

Adrian Borsato NSW 4172 Warren Steele NSW 6526

44 Park Beach Road (PO Box 6425)
Coffs Harbour NSW 2450
(02) 6651 4905
dracoffs@draarchitects.com.au
www.draarchitects.com.au



DRA Architects Pty Ltd accept no responsibility for
the usability, completeness, or accuracy of the data
transferred electronically. Recipients should, when
necessary, request a hard copy version for
verification. Use figured dimension in preference to
scale. all dimensions to be verified on site.

© Copyright

These drawings and designs and the copyright thereof
are the property of DRA Architects Pty Ltd and must
not be used, retained or copied without the written
permission of DRA Architects Pty Ltd A.B.N. 120 9692
9387

north

Drawing:

SECTIONS

scale
approved

1 : 100
WS

plotted
drawn

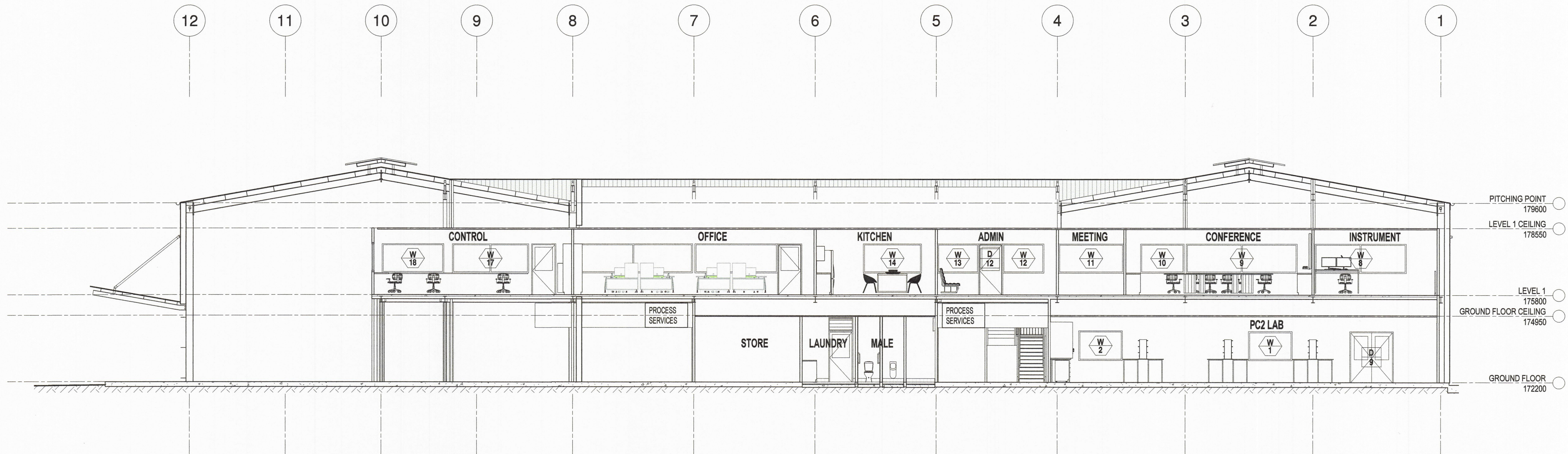
19/03/2019
AF

job No
18026

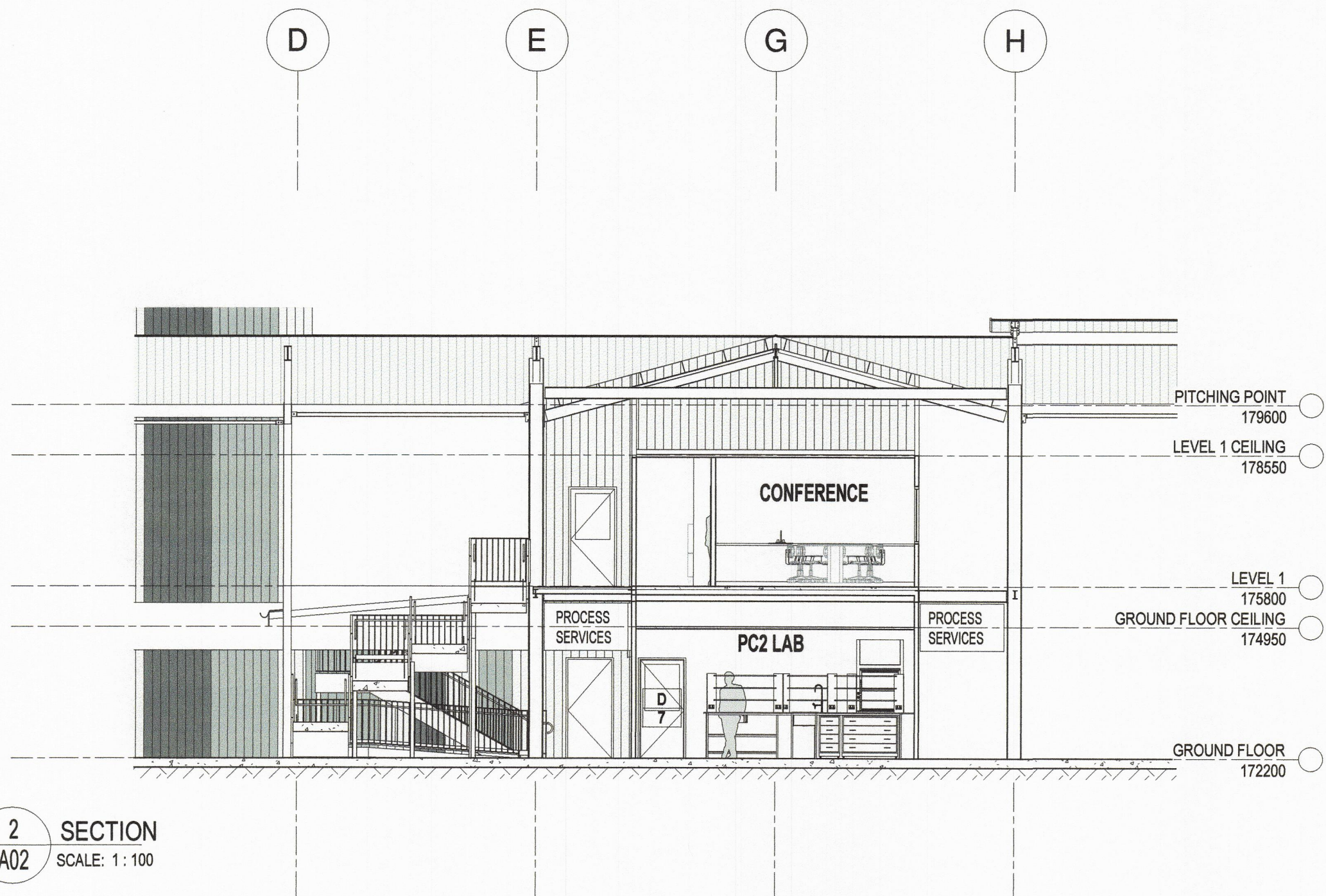
drawing number
A06

revision
D

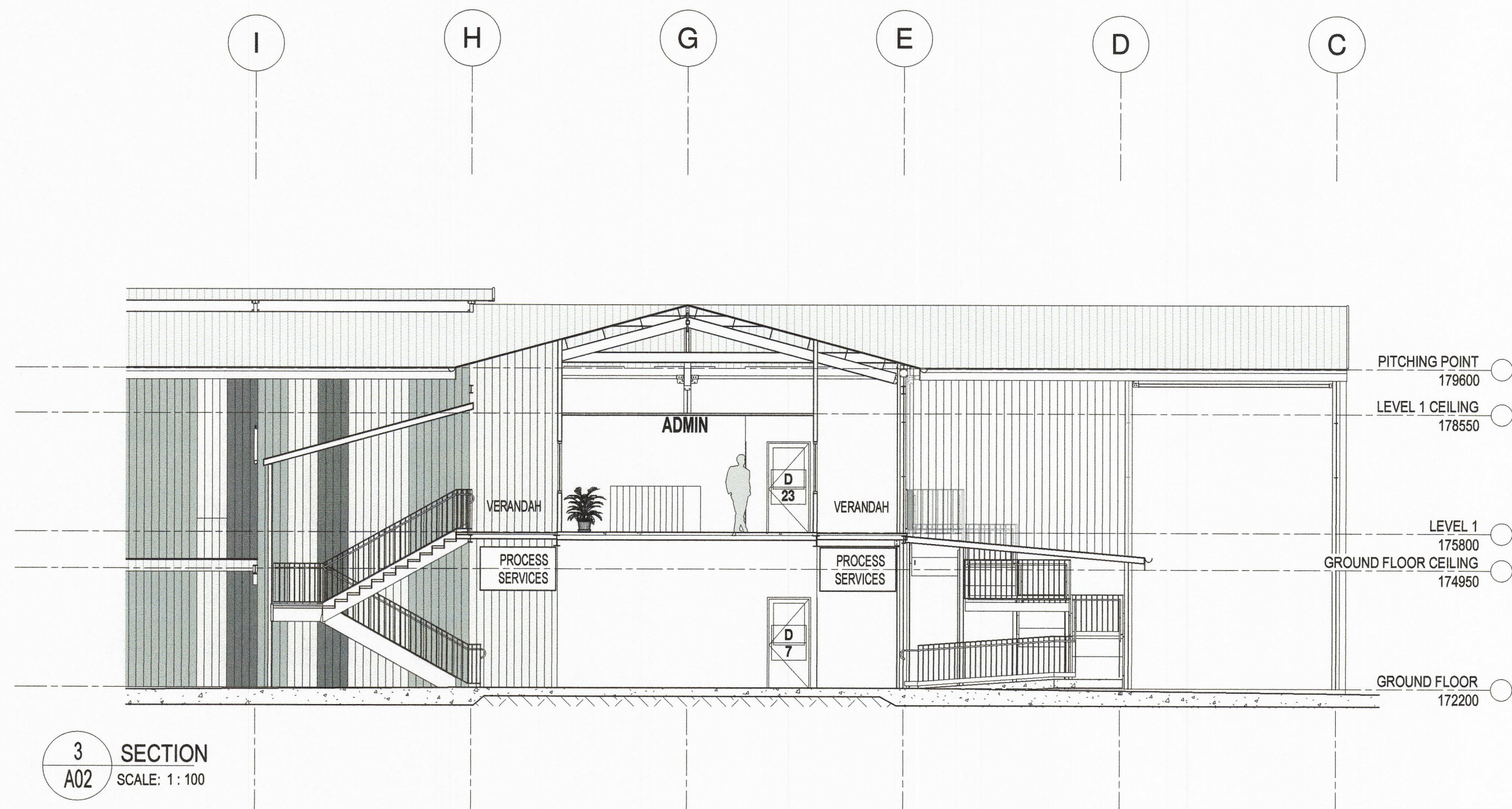
NOTE:
THESE DRAWINGS ILLUSTRATE THE OFFICE FITOUT ONLY.
THE REST OF THE DEVELOPMENT HAS BEEN INCLUDED ON
THESE DRAWINGS FOR CONTEXT PURPOSES.



1 SECTION
A02 SCALE: 1:100



2 SECTION
A02 SCALE: 1:100



3 SECTION
A02 SCALE: 1:100

D	19/03/19	99% PRELIMINARY REVISION: RAMP ADDED, FIRST FLOOR LOWERED, WINDOW AND DOOR LOCATIONS CHANGED, BUILDING BY OTHERS DOORS AND OPENINGS SHOWN	AF	WS
C	29/08/18	PREVIOUS DEVELOPMENT APPLICATION	AF	WS
revision	date	details	initials	checked
1:100	0	DESIGN MANAGER	DATE	1:100
A1	@	20	40	60
1:200	0	20	40	60

HUNTER PILOT BIOREFINERY OFFICE FITOUT

LOT 22, DP 1131270, CARRAMERE ROAD
MUSWELLBROOK, NSW, 2333

DRAARCHITECTS
Adrian Borsato NSW 4172 Warren Steele NSW 6526

44 Park Beach Road (PO Box 6425)
Coffs Harbour NSW 2450
(02) 6651 4905
dracoffs@draarchitects.com.au
www.draarchitects.com.au

ASBN 12 096 929 387

DRA Architects Pty Ltd accept no responsibility for the usability, completeness, or accuracy of the data transferred electronically. Recipients should, when necessary, request a hard copy version for verification. Use figured dimension in preference to scale. All dimensions to be verified on site.

© Copyright

These drawings and designs and the copyright thereof are the property of DRA Architects Pty Ltd and must not be used, retained or copied without the written permission of DRA Architects Pty Ltd A.B.N. 120 9692 9387

north

Drawing:

SECTIONS

scale

1:100

plotted

19/03/2019

job No

18026

drawing number

A07

revision

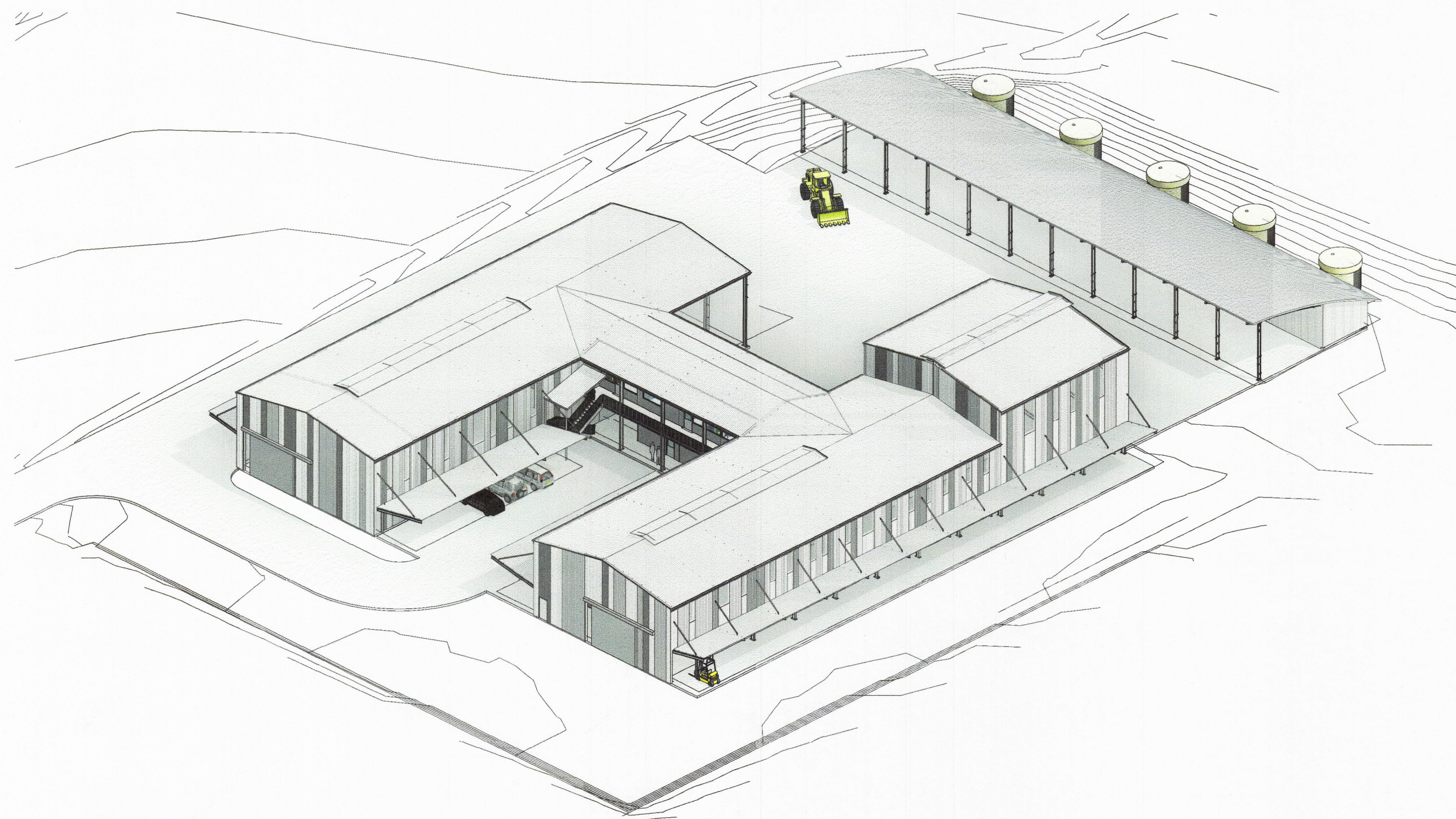
D

approved

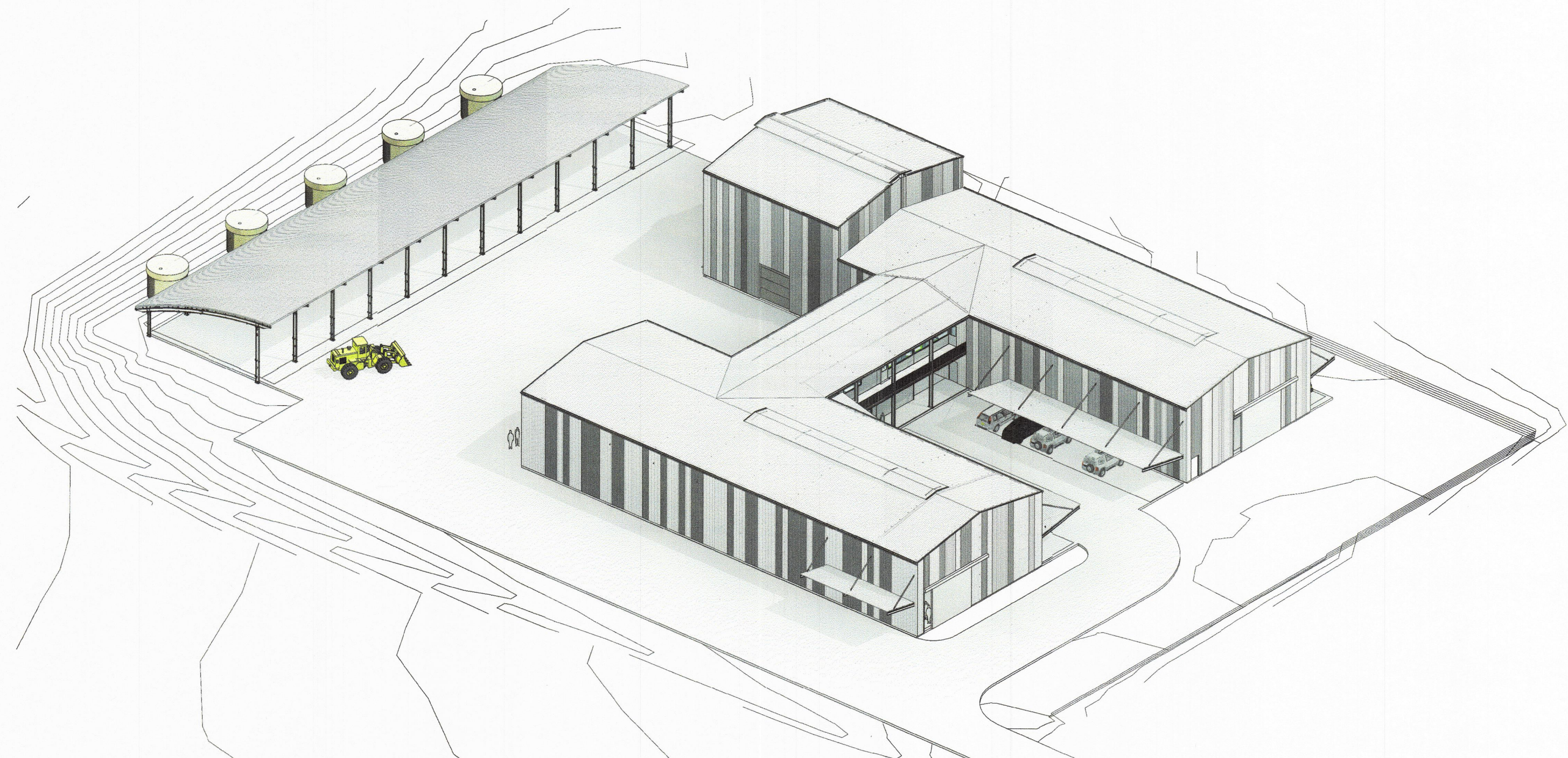
WS

drawn

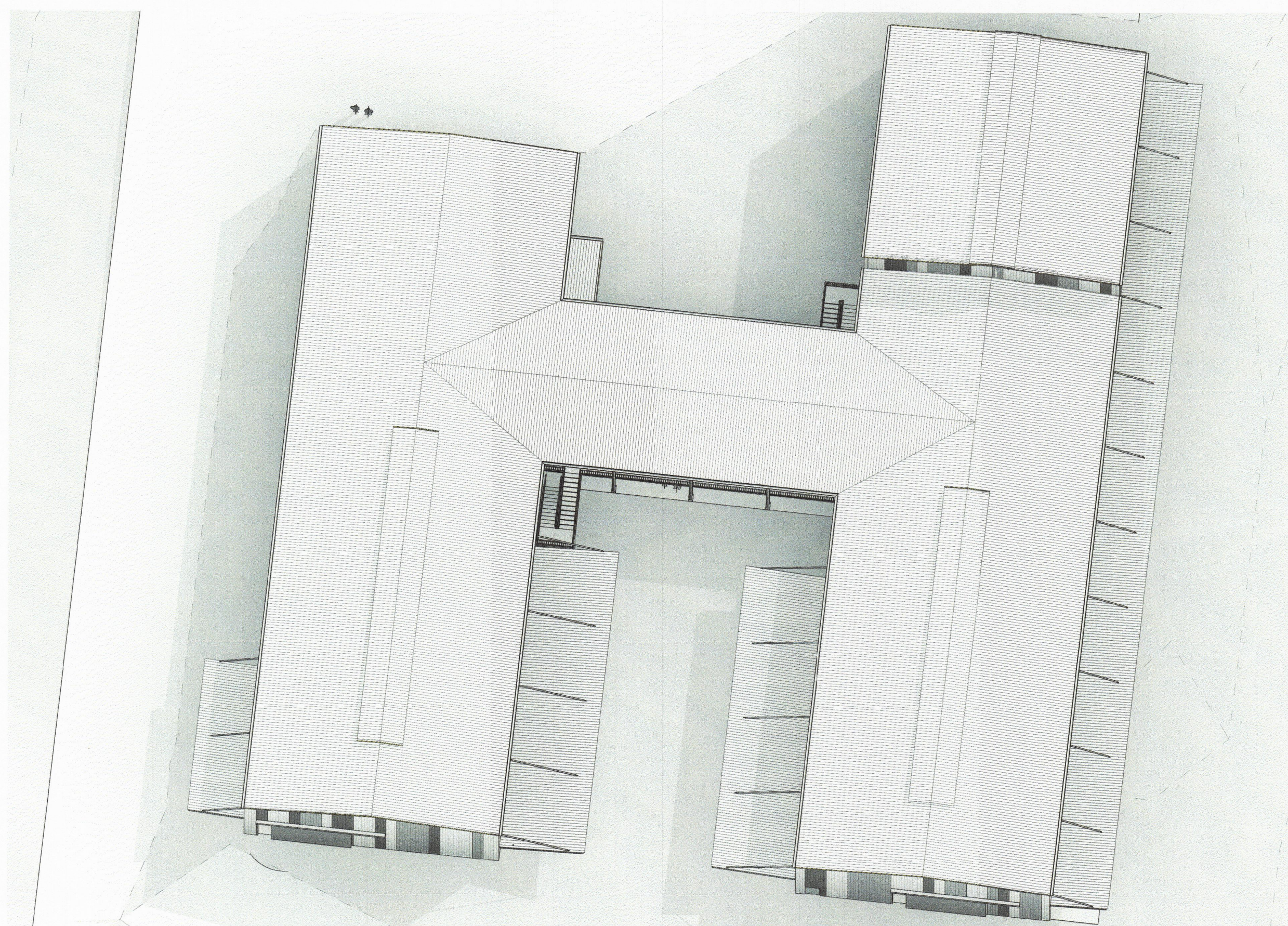
AF



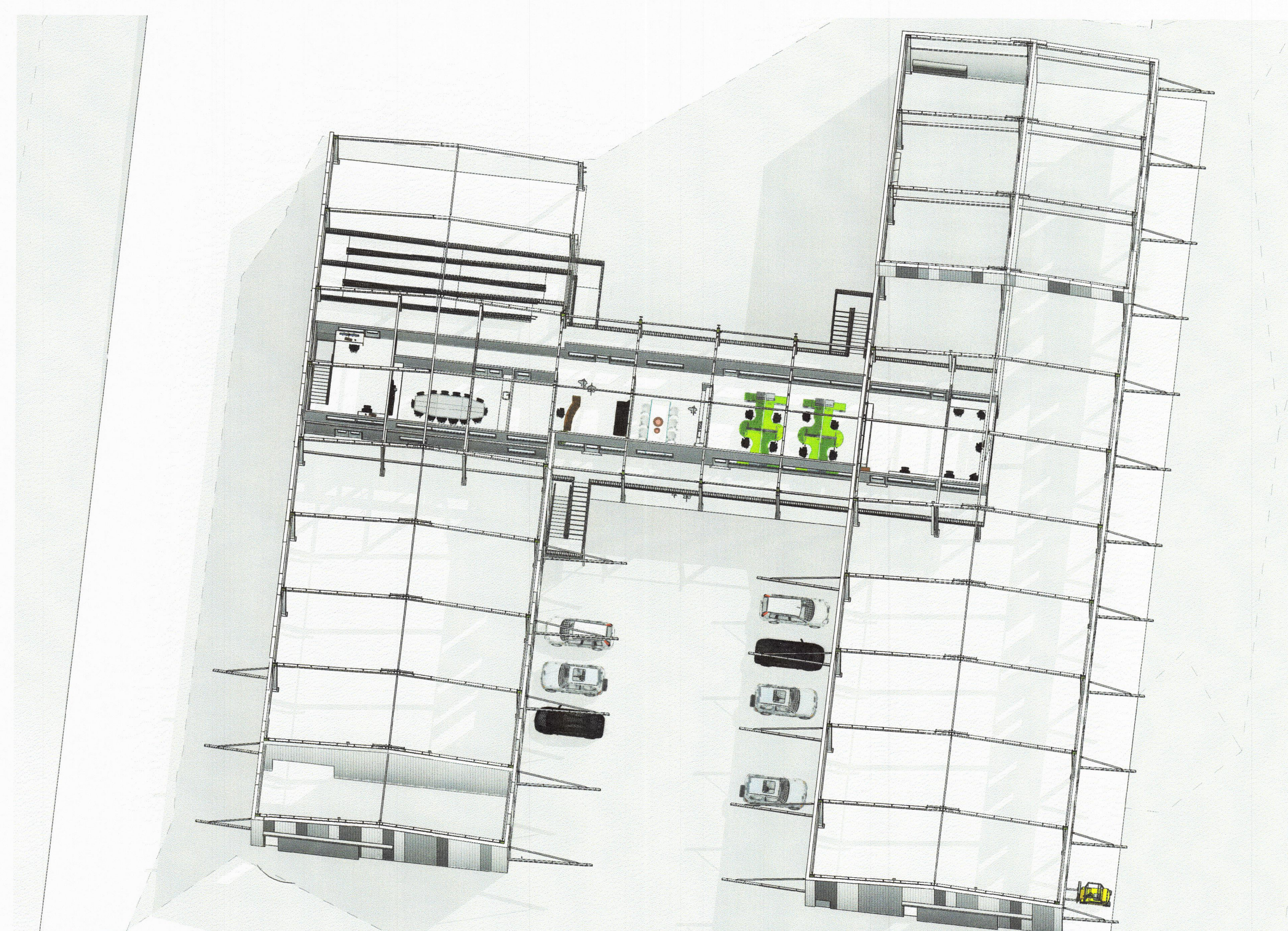
SITE 3D 1
SCALE:



SITE 3D 2
SCALE:



ENTIRE BUILDING ROOF
SCALE:



ENTIRE BUILDING NO ROOF
SCALE:

NOTE:
THESE DRAWINGS ILLUSTRATE THE OFFICE FITOUT ONLY.
THE REST OF THE DEVELOPMENT HAS BEEN INCLUDED ON
THESE DRAWINGS FOR CONTEXT PURPOSES.

HUNTER PILOT BIOREFINERY OFFICE FITOUT

LOT 22, DP 1131270, CARRAMERE ROAD
MUSWELLBROOK, NSW, 2333

DRAARCHITECTS

Adrian Borsato NSW 4172

Warren Steele NSW 6526

44 Park Beach Road (PO Box 6425)
Coffs Harbour NSW 2450
(02) 6651 4905
dracoffs@draarchitects.com.au
www.draarchitects.com.au



DRA Architects Pty Ltd accept no responsibility for the usability, completeness, or accuracy of the data transferred electronically. Recipients should, when necessary, request a hard copy version for verification. Use figured dimension in preference to scale. all dimensions to be verified on site.

© Copyright

These drawings and designs and the copyright thereof are the property of DRA Architects Pty Ltd and must not be used, retained or copied without the written permission of DRA Architects Pty Ltd A.B.N. 120 9692 9387

north

Drawing:

3D OVERALL

scale

WS

approved

plotted

drawn

19/03/2019

AF

job No

18026

drawing number

A08

revision

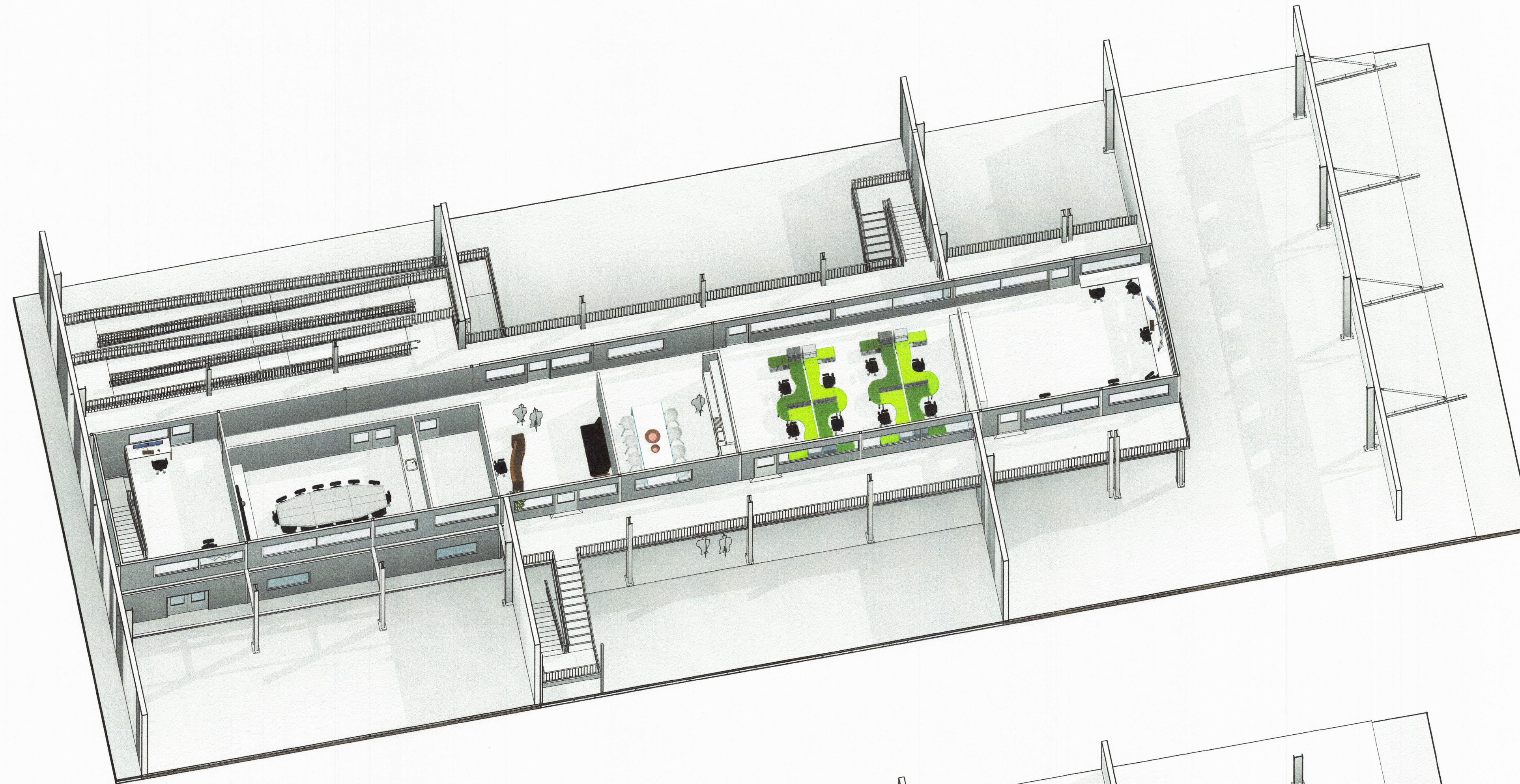
D

PRELIMINARY 99%

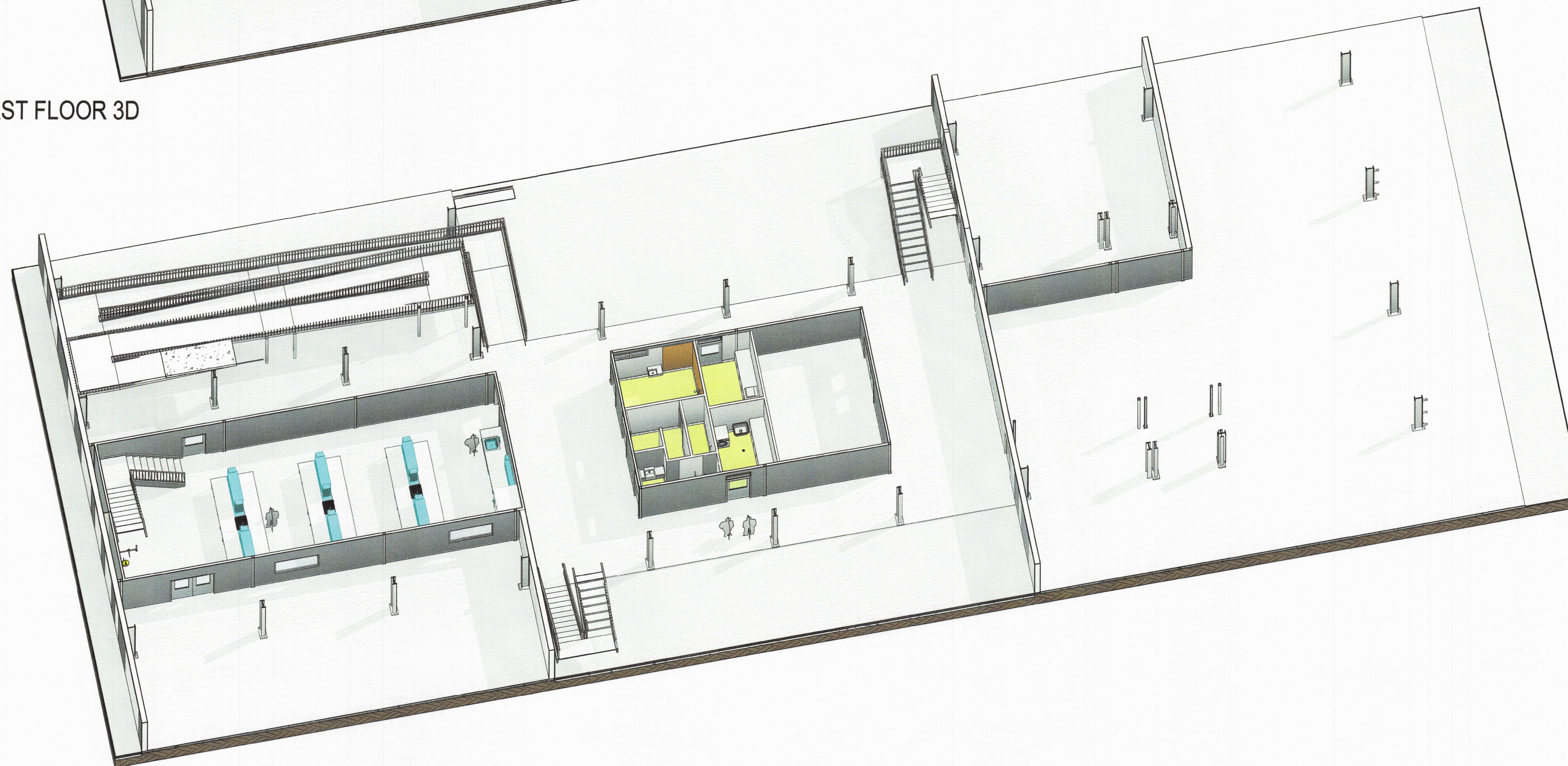
19/03/2019 10:49:59 AM

UN-CONTROLLED DOCUMENT -
CHANGES WILL BE MADE WITHOUT NOTICE

D	19/03/19	99% PRELIMINARY REVISION: RAMP ADDED, EXTERNAL CLADDING DESIGN, WINDOW AND DOOR LOCATIONS CHANGED, WALKWAYS ADDED, BUILDING BY OTHERS DOORS AND OPENINGS SHOWN	AF	WS							
C	29/08/18	PREVIOUS DEVELOPMENT APPLICATION	AF	WS							
revision	date	details	initials	checked							
APPROVED		DESIGN MANAGER	DATE	/ /							
1:100	0	10	20	30	40	50	60	70	80	90	100
A1 @ 1:200	0	20	40	60	80	100					200



FIRST FLOOR 3D
SCALE:



GROUND FLOOR 3D
SCALE:

NOTE:
THESE DRAWINGS ILLUSTRATE THE OFFICE FITOUT ONLY.
THE REST OF THE DEVELOPMENT HAS BEEN INCLUDED ON
THESE DRAWINGS FOR CONTEXT PURPOSES.

HUNTER PILOT BIOREFINERY OFFICE FITOUT

LOT 22, DP 1131270, CARRAMERE ROAD
MUSWELLBROOK, NSW, 2333

DRAARCHITECTS

Adrian Borsato NSW 4172 Warren Steele NSW 6526

44 Park Beach Road (PO Box 6425)
Coffs Harbour NSW 2450
(02) 6651 4905
draarchitects@draarchitects.com.au
www.draarchitects.com.au



DRA Architects Pty Ltd accept no responsibility for the usability, completeness, or accuracy of the data transferred electronically. Recipients should, when necessary, request a hard copy version for verification. Use figured dimension in preference to scale. all dimensions to be verified on site.

© Copyright

These drawings and designs and the copyright thereof are the property of DRA Architects Pty Ltd and must not be used, retained or copied without the written permission of DRA Architects Pty Ltd A.B.N. 120 9692 9387

north

Drawing: **3D OFFICE FITTOUT**

scale	plotted	19/03/2019	job No	drawing number	revision
approved	WS	drawn	AF	18026	A09

PRELIMINARY 99%

19/03/2019 10:50:56 AM

UN-CONTROLLED DOCUMENT -
CHANGES WILL BE MADE WITHOUT NOTICE

D	19/03/19	99% PRELIMINARY REVISION; RAMP ADDED, EXTERNAL CLADDING DESIGN, WINDOW AND DOOR LOCATIONS CHANGED, WALKWAYS ADDED, BUILDING BY OTHERS DOORS AND OPENINGS SHOWN	AF	WS
C	29/08/18	PREVIOUS DEVELOPMENT APPLICATION	AF	WS
revision	date	details	initials	checked
APPROVED		DESIGN MANAGER	DATE	
1:100	0	10 20 30 40 50 60 70 80 90 100		
A1	@	20 40 60 80 100		200